

S.M.A.R.T. PRO

Interface Program

System Monitor Acquisition & Reprogramming Tool

USER GUIDE



Subject to change without notice



SERVICE and SUPPORT, WEB REGISTRATION and SOFTWARE UPGRADES

FREE SW UPGRADES and NEWSLETTER SERVICE:

- ROVER offers the possibility of upgrading, free of charge, your instrument's Software and Memory Plans, by simply registering your data in the “**SW Upgrades**” area of the ROVER website www.roverinstruments.com:
- Once you have registered, you can download the **S.M.A.R.T. PRO ROVER** Interface program, free of charge, in order to be able to install SW upgrades and/or Memory Plans;
- ROVER also offers you the opportunity to sign up to our Newsletter service that provides free e-mails with information regarding: new SW updates, technical communications, training, press releases, new products, participation at exhibitions and roadshows and much more.

SW UPGRADES REGISTRATION AREA:

If you have not already registered, click on the words “Update SW“ in the menu in the right-hand corner:

- Click on “Register now (first access)” in the drop-down menu to access the **Update SW** area.
- Fill in the electronic form with all your personal information and the username of your choice.
- After you have completed the form, confirm by pressing the black “Send“ key at the bottom of the page.
- Once sent, a page will be shown with a summary of your Registration Data, where you can modify your data by clicking on the BLUE “**Change Data**” key, print it by clicking on the BLACK “**Print Data**” key, or directly access the Update SW area by clicking on the "**Access Update SW area**” key.
- You will also receive an e-mail message, reminding you of your chosen username and the password assigned by ROVER. Keep it in a safe place for future access to the **Update SW** area and so that you can download new SW upgrades and/or TV and SAT memory plans.
- If you lose your Password assigned by ROVER, click on the function “**Forgot Username Password ? Click here**” in the drop down menu in the “**Update SW**”.

ROVER S.M.A.R.T. Interface PROGRAM

The S.M.A.R.T. program was created by ROVER to allow you to interface your Meter with a PC. After you have accessed the Update SW Area, download and install the S.M.A.R.T. program on your PC. This program allows you to carry out SW upgrades and/or upload TV and SAT Memory Plans (.mem).

There are two types of S.M.A.R.T. program:

- ▲ **S.M.A.R.T. PRO** for all ROVER Meters;
- ▲ **S.M.A.R.T. FAST** for palm top models only.

The S.M.A.R.T. program has two versions:

Standard and **PRO**: the first installation activates the SMART PRO version free of charge for 30 days. The S.M.A.R.T. PRO Version (if you have not purchased its APP) expires after 30 days and automatically becomes S.M.A.R.T. Standard.

To buy the S.M.A.R.T. PRO APP contact the ROVER Service department by email:

wecare@roverinstruments.com

- ▲ The S.M.A.R.T. PRO allows you to carry out SW upgrades on your instrument.
- ▲ The S.M.A.R.T. PRO version is used to create personalized, mixed TV-SAT-CATV memory plans, download data loggers and manage your meter's memory.

ROVER S.M.A.R.T.: SW UPGRADES

SW upgrades do not include TV and SAT Memory Plans

SW UPGRADES PROCEDURE:

Once you have identified and downloaded the correct **S.M.A.R.T. ROVER** program on your PC (for more information, read the page about the S.M.A.R.T. Program in this manual), you must install it on your PC in order to upgrade your meter's software (SW). Then proceed as follows:

- In the "**Update SW**" area, identify the exact name/model of your meter and click on the corresponding picture;
- Then click on the relevant "SW Update" file and download it to your PC;
- If you wish to know the information relevant to the contents of the SW Upgrade, click on the blue "i".

WARNINGS:

- Before you upgrade the SW of your instrument, we suggest you close all open applications on your PC: email, internet, management programs, etc;
- Also, check that the meter's battery is charged and that the instrument is plugged in and, most of all, do not turn off or unplug the instrument during the upgrade. The instrument will automatically turn off once the SW upgrade has been completed.

N.B.: Although the progress graph of the PC appears locked up, never interrupt the update process, the update is still progressing regularly.

PROCEDURE:

1. Connect the instrument to the mains and turn it on;
2. Wait until the ignition phase (Start-Up) tool is completed;
3. Connect the USB cable, before the instrument and then the PC;
4. Start the interface ROVER-SMART PRO on your PC;
5. Click "Instrument" followed by "Upgrade Firmware";
6. In the Open window, select the file "Software Upgrade (.rvr)" already downloaded from the "Update SW";
7. Click "Open" and confirm the selection;
8. The procedure for updating the SW will start automatically;
9. Otherwise, it will open the Firmware Upgrade window, select in the window the exact model of your instrument, click "Upgrade" to start the update manually;
10. In a few minutes, the program ROVER-S.M.A.R.T. PRO will load the new SW in your meter;
11. When the update is complete, the PC screen will appear: Power on the meter to activate FW ****PROGRAM SUCCESFUL****;
12. If the instrument does not switched off automatically, switch-off, switch-on and check, in the start-up screen, or in the Self-Test screen, if the version number of the SW has been updated.

WARNINGS:

If the update is interrupted or fails, check the USB cable connections and repeat the update from the beginning. If the above procedure continues to fail, contact your ROVER dealer or write to: wecare@roverinstruments.com

You can download the SW upgrade procedure from your meter directly from the F.A.Q. pages of the ROVER website: www.roverinstruments.com

S.M.A.R.T.: SW UPDATE PROCEDURE

Measuring Instruments locked on BOOT

SW UPDATE PROCEDURE – Measuring Instruments locked on BOOT:

First of all you must download on your PC the correct **ROVER S.M.A.R.T.** program (for further information read the page about the S.M.A.R.T. Program in this manual) and install it on your PC in order to update the software (SW) of your instrument.

The download to SW for your instrument proceed as follows:

- In the "**Update SW**" area, identify the exact name/model of your meter and click on the corresponding picture;
- Then click on the relevant "SW Update" file and download it to your PC;
- If you wish to know the information relevant to the contents of the SW Upgrade, click on the blue "i".

WARNINGS:

- Before upgrading your instrument SW, we recommend that you close all applications running on your PC: email, internet WEB browser, application programs, etc.;
- Also check that the battery is charged and that the instrument is connected to the mains and most of all do not switch off or unplug the instrument during the upgrade. The instrument will automatically shut down at the end of the SW update.

NOTE: If the animated folder on your PC display that indicates that the SW update is in progress seems to be blocked, do not stop the SW upgrade because it is still in progress and will be completed normally.

PROCEDURE:

1. Connect the instrument to the mains and switch it on;
2. Wait until on the instrument's display appears the message " BOOT ";
3. Connect the USB cable first to the Instrument and after to the PC;
4. Start the ROVER S.M.A.R.T. program on your PC;
5. **Click directly on the letter U (Firmware Upgrade) at the top icons menu bar of the S.M.A.R.T. program;**
6. In the "Open file" window select "SW update (.rvr)" file that you have downloaded from the "**Update SW**" area;
7. Click on "Open" and confirm;
8. The SW update process will start automatically;
9. It will take a few minutes for the S.M.A.R.T. program to load the new SW in your measuring instrument;
10. When the upgrade is completed successfully, on the PC screen will appear the following message:
Power on the meter to activate FW ****PROGRAM SUCCESSFUL****;
11. If the measuring instrument does not switch off automatically, switch it off and on and then check if the SW version number has been updated in the initial welcome (Start -Up) or in the self-test (INFO ANALYZER / INSTRUMENT) screens.

WARNING:

In the event that the upgrade is interrupted or fails to be successful, we suggest that you check the USB cable connections and repeat the update procedure again from the beginning.

If the above procedure continues to fail, contact your local ROVER agent, or contact the ROVER service department directly by email: wecare@roverinstruments.com.

It is possible to download the unlocking procedure of the instrument directly from the FAQ on the ROVER website: www.roverinstruments.com

S.M.A.R.T. PRO: MEMORY PLAN UPGRADE

TV Channel Plans and Satellite Lists

SW UPDATE PROCEDURE – MEMORY PLANS:

First of all you must download on your PC the correct **ROVER S.M.A.R.T.** program (for further information read the page about the S.M.A.R.T. Program in this manual) and install it on your PC in order to update the Memory Plans of your instrument, then proceed as follows:

- In the "**Update SW**" area, identify the exact name/model of your meter and click on the corresponding picture;
- Then click on the relevant "Plans and Satellites" file and download it on your PC.

WARNINGS:

- Before upgrading your instrument SW, we recommend that you close all applications running on your PC: email, internet WEB browser, application programs, etc.;
- Also check that the battery is charged and that the instrument is connected to the mains and most of all do not switch off or unplug the instrument during the upgrade. The instrument will automatically shut down at the end of the SW update.

NOTE: If the animated folder on your PC display that indicates that the SW update is in progress seems to be blocked, do not stop the memory plans upgrade because the procedure is still in progress and will be completed normally.

PROCEDURE:

1. Connect the instrument to the mains and switch it on;
2. Wait for the start-up phase to be completed;
3. Connect the USB cable first to the Instrument and after to the PC;
4. Make sure you have installed the PRO version and start the ROVER S.M.A.R.T. program on your PC;
5. Click on "Instrument" then on "Connect Instrument";
6. Click on "Tools", then "Mem" and then "Open Mem";
7. In the "Open file" window select the "Memory Plan (.mem)" file that you have downloaded from the "**Update SW**" area;
8. Click on "Open" and confirm the selection;
9. Click on "Tools", then "Mem" and then "Write Mem to Instruments";
10. The following message will appear: **This operation will delete all the previous plans stored in the meter;**
11. Click on "OK" and confirm to start the up-grade;
12. After a few minutes, the S.M.A.R.T. PRO program will load the new Memory Plans in your measuring instrument;
13. When the upgrade is completed successfully, on the PC screen will appear the following message: Plan Memory download successfully !

WARNINGS:

In the event that the upgrade is interrupted or fails to be successful, we suggest that you check the USB cable connections and repeat the update procedure again from the beginning.

If the above procedure continues to fail, contact your local ROVER agent, or contact the ROVER service department directly by email: wecare@roverinstruments.com.


It is possible to download the unlocking procedure of the instrument directly from the FAQ on the ROVER website: www.roverinstruments.com

1.0 CONNECT INSTRUMENT (HOW TO CONNECT YOUR INSTRUMENT TO A PC)

This procedure allows the S.M.A.R.T. PRO program to recognise and connect your measuring instrument to a PC.

1.1 SIMPLE PROCEDURE

INSTRUMENT TO PC CONNECTION

1. Connect your instrument to the PC,
2. Turn on your instrument,
3. Start the S.M.A.R.T. PRO program,
4. Click on  (see Instrument Bar Description).

1.2 DETAILED PROCEDURE

1.2.1 CONNECTION BETWEEN INSTRUMENT & PC

- a) Connect the instrument to the PC,
- b) Turn on the instrument,
- c) Start the S.M.A.R.T. PRO program,
- d) On the instrument bar click on “Instrument” and “Connect Instrument”.

1.3 NOTES

- a) If the procedure is carried out correctly, the bar below the PC will show the data of the instrument connected: model, serial number, Firmware version (FW) and the connected port number (COM).
- b) If you are using the Windows 8 operating system may need to install the drivers manually. For more information see the previous page of this manual.

1.4 WARNING




If the above procedure continues to fail, contact your local ROVER agent, or contact the ROVER service department directly by email: wecare@roverinstruments.com.

3.0 GET SCREEN

This function allows you to transfer any data display from your instrument to a PC, to print it or save the file (see Note Ref 3.3.a and 3.3.b).

3.1 SIMPLE PROCEDURE

GET SCREEN

1. Carry out all the necessary connections (see paragraph 1.0),
2. Click on  (See instrument bar description),
3. Wait for the display to appear on the PC monitor,
4. Select one of two options:
 - Transfer screens to the PC – (see paragraph 3.2.1),
 - Print from the PC by pressing  – (see paragraph 3.2.2),
 - Save it on the PC by pressing  – (see paragraph 3.2.3).

3.2 DETAILED PROCEDURE

3.2.1 HOW TO TRANSFER A DISPLAY FROM INSTRUMENT TO PC

- a) Connect your instrument to a PC by following the procedure described in paragraph 1.0,
- b) Click on “Tools” and “Get Screen” on the instrument bar,
- c) Wait for the display to appear on the PC monitor.

3.2.2 HOW TO PRINT THE DISPLAY

- a) Connect your instrument to a PC by following the procedure described in paragraph 1.0,
- b) Click on “Tools” and “Get Screen” on the instrument bar.
- c) Click on “File” on the instrument bar and select “Print Setup”.
- d) Configure the print settings and press “OK” to confirm.

3.2.3 SHOW TO SAVE THE METERS DISPLAY ON A PC

- a) Connect your instrument to a PC by following the procedure described in paragraph 1.0,
- b) Click on “Tools” and “Get Screen” on the instrument bar.
- c) Click on “File” on the instrument bar and select “Save As”,
- d) Chose a location where you want to save the file and press “Save”,
- e) S.M.A.R.T. PRO will save the displays obtained from the meter in bitmap (.bmp) format.

3.3 NOTES

- a) The display's meters can always be transferred to the PC.
- b) Not all models can transfer demodulated television pictures.

3.4 WARNINGS





If the above procedure continues to fail, contact your local ROVER agent, or contact the ROVER service department directly by email: wecare@roverinstruments.com.

4.0 INSTRUMENT FILE MANAGER (DATA LOGGER MANAGEMENT)

This operation allows you to transfer Data Loggers from your measuring instrument to a PC and then modify them, print them, cancel them or save them in your PC (See not ref. 4.3.a).

4.1 SIMPLIFIED PROCEDURE

DATA LOGGER MANAGEMENT

1. Carry out all the necessary connections (see paragraph 1.0),
2. Click on  (see instrument bar description),
3. Wait for the complete file list to download on your instrument,
4. Open the Logger folder and visualize the LOGS inside,
5. Open the LOG folder to visualize the POINTS inside,
6. Open the POINT you require,
7. Select one of the following options:
 - Transfer loggers in your PC – (see paragraph 4.2.1),
 - Print loggers by pressing  – (see paragraph 4.2.2),
 - Save loggers on your PC by pressing  – (see paragraph 4.2.3),
 - Cancel loggers by pressing  (see paragraph 4.2.4),
 - Export loggers in Excel or text files – (see paragraph 4.2.5).

4.2 DETAILED PROCEDURE

4.2.1 HOW TO TRANSFER A DATA LOGGER FROM YOUR METER TO A PC

- a) Connect your instrument to a PC by following the procedure described in paragraph 1.0,
- b) Click on “Instrument” on the instrument bar and select “Instrument File Manager”,
- c) Wait for the complete file list to download from your instrument to the PC,
- d) The window “INSTRUMENT FILE MANAGER” will open (see Fig. 4.1),
- e) In the field “Find in” select the “Logger” folder to visualize the “LOG” folders inside,
- f) Click twice on the “LOG” folder to visualize the “POINT” inside,
- g) Click twice on the “POINT” required to visualize it (see Fig. 4.2).

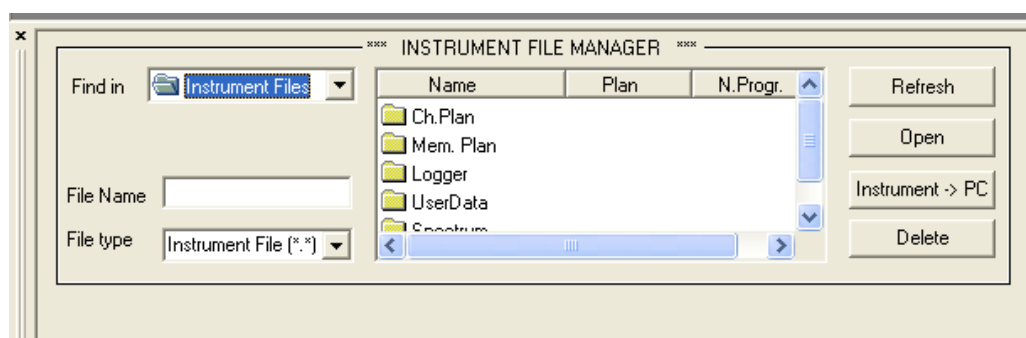


Figure 4.1

4.2.2 HOW TO PRINT A DATA LOGGER FILE FROM YOUR METER TO A PC

- a) Connect your instrument to a PC by following the procedure described in paragraph 1.0,
- b) Click on “Instrument” on the instrument bar and select “Instrument File Manager”,
- c) Wait for the complete file list to download from your instrument to the PC,
- d) The window “INSTRUMENT FILE MANAGER” will open (see Fig. 4.1),
- e) In the field “Find in” select the “Logger” folder to visualize the “LOG” folders inside,
- f) Click twice on the “LOG” folder to visualize the “POINT” inside,

- g) Click twice on the “POINT” required to visualize it (see Fig. 4.2).
- h) Click on “File” on the instrument bar and select “Print Setup”,
- i) Configure the print settings and press “OK” to print.

4.2.3 HOW TO SAVE A DATA LOGGER FILE FROM YOUR METER TO A PC

- a) Connect your instrument to a PC by following the procedure described in paragraph 1.0,
- b) Click on “Instrument” on the instrument bar and select “Instrument File Manager”,
- c) Wait for the complete file list to download from your instrument to the PC,
- d) The window “INSTRUMENT FILE MANAGER” will open (see Fig. 4.1),
- e) In the field “Find in” select the “Logger” folder to visualize the “LOG” folders inside,
- f) Click twice on the “LOGxx” folder required to visualize the “POINT” inside,
- g) Click twice on the “POINTxx” required to visualize it (see Fig. 4.2),
- h) Click on “File” on the instrument bar and select “Save as”,
- i) Chose the location where you want to save the file, name it and press “Save” (see Fig. 5.2),
- j) S.M.A.R.T. PRO will save the LOGGER obtained from the meter in the PC in file format .chn.

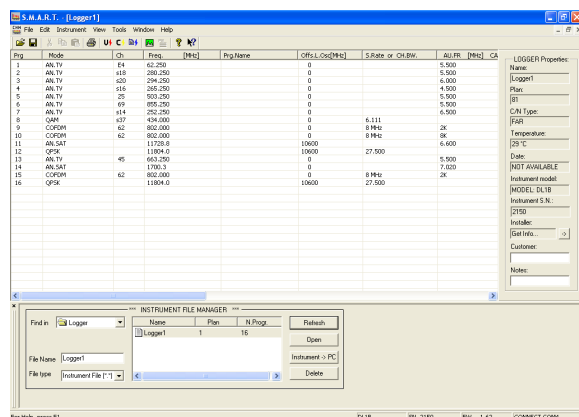


Figure 4.2

4.2.4 HOW TO CANCEL LOGGERS FROM YOUR METER USING A PC

- a) Connect your instrument to a PC by following the procedure described in paragraph 1.0,
- b) Click on “Instrument” on the instrument bar and select “Instrument File Manager”,
- c) Wait for the complete file list to download from your instrument to the PC,
- d) The window “INSTRUMENT FILE MANAGER” will open (see Fig. 4.1),
- e) In the field “Find in” select the “Logger” folder to visualize the “LOGxx” folders inside,
- f) Select the “LOGxx” folder required containing all the “POINTxx” files you want to cancel,
- g) In the “INSTRUMENTS FILE MANAGER” window press the “Delete” key, the “LOGxx” containing all the “POINTxx” files with be cancelled from the meter.

4.2.5 HOW TO EXPORT LOGGERS FROM YOUR METER TO A PC IN AN EXCEL SPREADSHEET

- a) Connect your instrument to a PC by following the procedure described in paragraph 1.0,
- b) Click on “Instrument” on the instrument bar and select “Instrument File Manager”,
- c) Wait for the complete file list to download from your instrument to the PC,
- d) The window “INSTRUMENT FILE MANAGER” will open (see Fig. 4.1),
- e) In the field “Find in” select the “Logger” folder to visualize the “LOGxx” folders inside,
- f) Select the “LOGxx” folder required containing all the “POINTxx” files,
- g) Click twice on the required “POINTxx” to visualize it (see Fig. 4.2),
- h) Click on “File” on the instrument bar and select “Export”,
- i) In the window that opens, name the file (File Name) and chose where to save it (Save in) (See Fig. 5.2),
- j) Chose the Excel extension (Save as: xxxx.xls) (See Fig. 5.2) and select “Save” (See Fig. 5.2),
- k) S.M.A.R.T. PRO will save and the LOGGERxx file acquired by the meter in .xls format.

4.3 NOTE

- a) Not all models have this function.

4.4 WARNINGS





If the above procedure continues to fail, contact your local ROVER agent, or contact the ROVER service department directly by email: wecare@roverinstruments.com.

5.0 INSTRUMENT FILE MANAGER (SPECTRUM MANAGEMENT)

This function allows you to transfer SPECTRUMS, saved previously on your meter, to a PC in order to be able to print them or save them on your PC (see paragraph 5.3.a).

5.1 SIMPLIFIED PROCEDURE

SPECTRUM MANAGEMENT

1. Carry out all the necessary connections (see paragraph 1.0),
2. Click on  (see instrument bar description),
3. Wait for the complete file list to download on your instrument,
4. Open the Spectrum folder and open the Spectrum file,
5. Open the SPECT you require (see Fig. 4.1),
6. Select one of the following options:
 - Transfer spectrums to a PC – (see paragraph 5.2.1),
 - Print spectrums by pressing  – (see paragraph 5.2.2),
 - Save spectrums by pressing  – (see paragraph 5.2.3),
 - Cancel spectrums by pressing  – (see paragraph 5.2.4),
 - Export spectrums in an Excel file – (see paragraph 5.2.5).

5.2 DETAILED PROCEDURE

5.2.1 HOW TO TRANSFER SPECTRUMS FROM YOUR METER USING A PC

- a) Connect your instrument to a PC as described in paragraph 1.0
- b) Click on “Instrument” on the instrument bar and select “Instrument File manager”.
- c) Wait for the file list to be downloaded from your meter to the PC,
- d) Your monitor will show the “INSTRUMENTS FILE MANAGER” folder; (see Fig. 4.1),
- e) In the “Find in” file, select the “Spectrum” folder to visualize the “SPECT” files listed,
- f) Click twice on the “SPECT” file to show it on the screen (see Fig. 5.1).

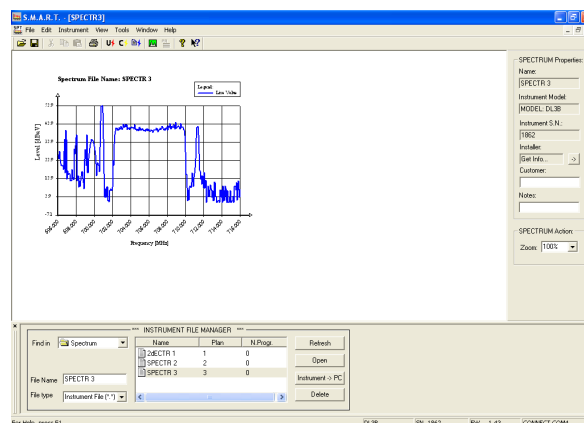


Fig. 5.1

5.2.2 HOW TO PRINT SPECTRUMS FROM YOUR METER USING A PC

- a) Connect your instrument to a PC by following the procedure described in paragraph 1.0,
- b) Click on “Instrument” on the instrument bar and select “Instrument File manager”,
- c) Wait for the complete file list to download from your instrument to the PC,
- d) The window “INSTRUMENT FILE MANAGER” will open (see Fig. 4.1),
- e) In the “Find in” field, select the “Spectrum” folder to visualize the “SPECTxx” listed,
- f) Click twice on the “SPECTxx” required to visualize it (see Fig. 5.1),
- g) Click on “File” on the instrument bar and select “Print Setup”
- h) Configure the print settings and press “OK” to print.

5.2.3 HOW TO SAVE A SPECTRUM ON TO A PC

- a) Connect your instrument to a PC by following the procedure described in paragraph 1.0,
- b) Click on “Instrument” on the instrument bar and select “Instrument File Manager”,
- c) Wait for the complete file list to download from your instrument to the PC,
- d) The window “INSTRUMENT FILE MANAGER” will open (see Fig. 4.1),
- e) In the “Find in” window select the “Spectrum” folder to visualise the “SPECT” inside,
- f) Click twice on the “SPECTxx” required to visualize it (see Fig. 5.1),
- g) Click on “File” on the instrument bar and select “Save As”,
- h) Chose the location where you want to save the file, give it a name and press “Save” (see Fig. 5.2),
- i) S.M.A.R.T. PRO will save the SPECTRUM, obtained from the meter, into the PC in .spt format.

5.2.4 HOW TO CANCEL SPECTRUMSN FROM YOUR INSTRUMENT USING A PC

- α) Connect your instrument to a PC by following the procedure described in paragraph 1.0,
- β) Click on “Instrument” on the instrument bar and select “Instrument File Manager”,
- χ) Wait for the complete file list to download from your instrument to the PC,
- δ) The window “INSTRUMENT FILE MANAGER” will open (see Fig. 4.1),
- ε) In the “Find in” window select the “Spectrum” folder to visualise the “SPECT” inside,
- φ) Select the “SPECTxx” you require to visualize it (Fig. 5.1),
- γ) In the “INSTRUMENTS FILE MANAGER” window press the “Delete” key, the “SPECTxx” will be cancelled from the instrument.

5.2.5 EXPORT THE SPECTRUMS FROM THE INSTRUMENT TO A PC IN EXCEL FORMAT

- α) Connect your instrument to a PC by following the procedure described in paragraph 1.0,
- β) Click on “Instrument” on the instrument bar and select “Instrument File Manager”,
- χ) Wait for the complete file list to download from your instrument to the PC,
- δ) The window “INSTRUMENT FILE MANAGER” will open (see Fig. 4.1),
- ε) In the “Find in” window select the “Spectrum” folder to visualise the “SPECT” inside,
- φ) Click twice on the “SPECTxx” file required to visualize it (Fig. 5.1),
- γ) Click on “File” on the instrument bar and select “Export”,
- η) A window will open, name the file (file name) and chose where to save it (Save in),
- ι) Chose the Excel extension (Save as: xxxx.xls) (see Fig. 5.2),
- φ) Select “Save” (see Fig. 5.2),
- κ) S.M.A.R.T. PRO will save the “SPECTxx”, obtained from the meter, into the PC in .xls format (see Fig. 5.2).

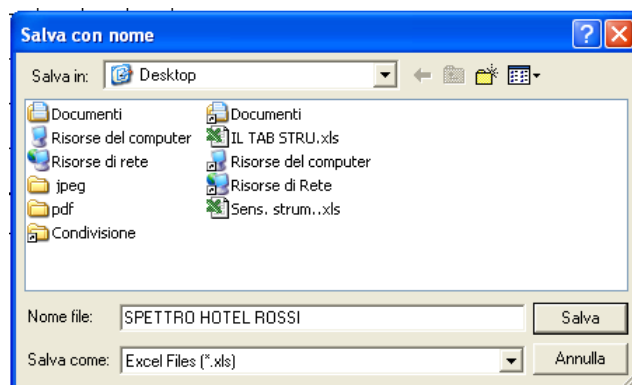


Figure 5.2

5.3 NOTE

- a) Not all models have this function.

5.4 WARNING





If the above procedure continues to fail, contact your local ROVER agent, or contact the ROVER service department directly by email: wecare@roverinstruments.com.

7.0 INSTRUMENT FILE MANAGER (MANUAL MANAGEMENT OF MEMORY PLANS AND SATELLITE LISTS)

This function allows you to transfer MANUAL MEMORY PLANS and SATELLITE LISTS, saved previously in your meter, to a PC in order to be able to modify them, print them, cancel them or save them on your PC (see paragraph 7.3.a).

7.1 SIMPLIFIED PROCEDURE

MANAGEMENT OF MANUAL MEMORY PLANS AND SATELLITE LISTS

1. Carry out all the necessary connections (see paragraph 1.0),
2. Click on  (see instrument bar description),
3. Wait for the complete file list to download from your meter,
4. Open the Mem. Plan folder to visualize the plans inside,
5. Open the plan required
6. Select one of the following options
 - Transfer a channel plan from an instrument to a PC - (see paragraph 7.2.1),
 - Modify a channel plan - (see paragraph 7.2.2),
 - Transfer a channel plan from a PC to an instrument - (see paragraph 7.2.3),
 - Print a channel plan by pressing  – (see paragraph 7.2.4),
 - Save a channel plan by pressing  – (see paragraph 7.2.5),
 - Cancel a channel plan by pressing  – (see paragraph 7.2.6).

7.2 DETAILED PROCEDURE

7.2.1 HOW TO TRANSFER MEMORY PLANS FROM YOUR METER TO A PC

- a) Connect your instrument to a PC by following the procedure described in paragraph 1.0,
- b) Click on “Instrument” on the instrument bar and select “Instrument File Manager”,
- c) Wait for the complete file list to download from your instrument to the PC,
- d) The window “INSTRUMENT FILE MANAGER” will open (see Fig. 4.1),
- e) In the “Find in” window, select the “Mem. Plan” folder to visualize the memory plans inside,
- f) Click twice on the required memory plan to visualize it (see Fig 7.1).

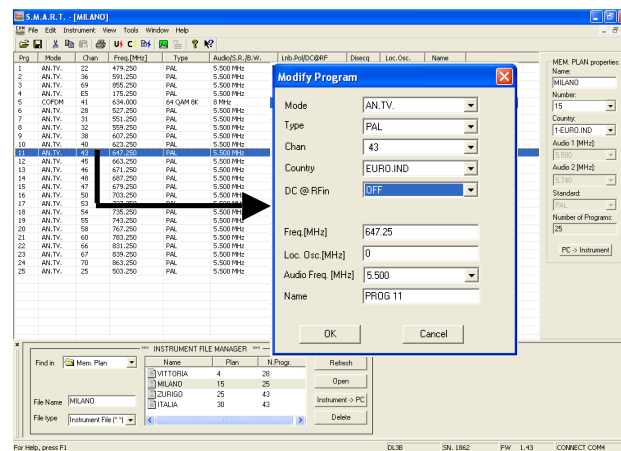


Figure 7.1

7.2.2 HOW TO CHANGE MEMORY PLANS IN YOUR METER USING A PC

HOW TO MODIFY A PROGRAM THAT ALREADY EXISTS

- a) Connect your instrument to a PC by following the procedure described in paragraph 1.0,
- b) Click on “Instrument” on the instrument bar and select “Instrument File Manager”,

- c) Wait for the complete file list to download from your instrument to the PC,
- d) The window “INSTRUMENT FILE MANAGER” will open (see Fig. 4.1),
- e) In the “Find in” window select the folder “Mem. Plan” to visualize the MEMORY PLANS inside,
- f) Click twice on the memory plan you want to visualize in the PC (see Fig. 7.1),
- g) Click twice on the PROGRAM (Radio-TV-SAT) you require to visualize it,
- h) The program will open a window where it is possible to change all the parameters regarding the chosen program (see Fig. 7.1),
- i) Set the parameters and press “Ok” to confirm the program modification (see Fig. 7.1).

HOW TO ADD A NEW PROGRAM

- a) Connect your instrument to a PC by following the procedure described in paragraph 1.0,
- b) Click on “Instrument” on the instrument bar and select “Instrument File Manager”,
- c) Wait for the complete file list to download from your instrument to the PC,
- d) The window “INSTRUMENT FILE MANAGER” will open (see Fig. 4.1),
- e) In the “Find in” window select the folder “Mem. Plan” to visualize the MEMORY PLANS inside,
- f) Click twice on the memory plan you want to visualize in the PC (see Fig. 7.1),
- g) Using the right side of the mouse, click on the required line and select “Add”,
- h) The program will open a window where it will be possible to see all the parameters regarding the new program to be added (see Fig. 7.1),
- i) Press “Ok” to confirm the addition of the new program.

7.2.3 HOW TO TRANSFER MEMORY PLANS FROM A PC TO YOUR METER

- a) Carry out the changes by following the procedure described in paragraph 7.2.2 (MODIFY AND EXISTING PROGRAM or ADD A NEW PROGRAM),
- b) Click on the “PC-Instrument” key in the “MEM. PLAN properties:” section (on the right-hand side of the screen) to transfer the memory plans from you PC to an instrument,
- c) The memory plan will be loaded in the instrument and will replace the one previously stored.

7.2.4 HOW TO PRINT MEMORY PLANS FROM THE METER USING A PC

- a) Connect your instrument to a PC by following the procedure described in paragraph 1.0,
- b) Click on “Instrument” on the instrument bar and select “Instrument File Manager”,
- c) Wait for the complete file list to download from your instrument to the PC,
- d) The window “INSTRUMENT FILE MANAGER” will open (see Fig. 4.1),
- e) In the “Find in” window select the folder “Mem. Plan” to visualize the MEMORY PLANS inside,
- j) Click twice on the memory plan you want to visualize in the PC (see Fig. 7.1),
- f) On the instrument bar click on “File” and select “Print Setup”,
- g) Set the print parameters and press “OK”.

7.2.5 HOW TO SAVE MEMORY PLANS FROM YOUR METER IN A PC

- a) Connect your instrument to a PC by following the procedure described in paragraph 1.0,
- b) Click on “Instrument” on the instrument bar and select “Instrument File Manager”,
- c) Wait for the complete file list to download from your instrument to the PC,
- d) The window “INSTRUMENT FILE MANAGER” will open (see Fig. 4.1),
- e) In the “Find in” window select the folder “Mem. Plan” to visualize the MEMORY PLANS inside,
- f) Click twice on the memory plan you want to visualize in the PC (see Fig. 7.1),
- g) On the instrument bar click on “File” and select “Save As”,
- h) Chose where you want to save the file, name it and press “Save” (see Fig. 5.2),
- i) The S.M.A.R.T. PRO program will save the memory plan, obtained from the meter, in the PC in file format .chn.

7.2.6 HOW TO DELETE MEMORY PLANS FROM YOUR METER USING A PC

- a) Connect your instrument to a PC by following the procedure described in paragraph 1.0,
- b) Click on “Instrument” on the instrument bar and select “Instrument File Manager”,
- c) Wait for the complete file list to download from your instrument to the PC,
- d) The window “INSTRUMENT FILE MANAGER” will open (see Fig. 4.1),
- e) In the “Find in” window select the folder “Mem. Plan” to visualize the MEMORY PLANS inside,
- f) Click twice on the memory plan required to visualize it,
- g) In the “INSTRUMENTS FILE MANAGER” window, press the “Delete” key; the memory plan will be cancelled from the instrument.

7.3 NOTE

- a) Not all models have this function.

7.4 WARNING





If the above procedure continues to fail, contact your local ROVER agent, or contact the ROVER service department directly by email: wecare@roverinstruments.com.

8.0 INSTRUMENT FILE MANAGER (TV MASTER – CHANNEL PLAN MANAGEMENT)

This function allows you to transfer TvMASTER CHANNEL PLANS, present in your measuring instrument, to a PC so that it can be modified, printed, cancelled or saved in the PC (See note paragraph 8.3.a).

8.1 SIMPLIFIED PROCEDURE

TvMASTER CHANNEL PLAN MANAGEMENT

1. Carry out all the necessary connections (See paragraph 1.0),
2. Click on  (see instrument bar description),
3. Wait for the complete file list to download on your instrument,
4. Open th Ch. Plan folder to visualize the plans inside,
5. Select the file you want to open,
6. Select one of the following options:
 - Transfer plans from your meter to a PC - (See paragraph 8.2.1),
 - Modify a Channel plani - (See paragraph 8.2.2),
 - Download a Channel Plan from a PC to your meter - (See paragraph 8.2.3),
 - Print a Channel Plan by pressing  - (See paragraph 8.2.4),
 - Save a Channel Plan by pressing  - (See paragraph 8.2.5),
 - Delete a Channel Plan by pressing  - (See paragraph 8.2.6).

8.2 DETAILED PROCEDURE

8.2.1 HOW TO TRANSFER A TvMASTER PLAN FROM YOUR METER TO A PC

- a) Connect your instrument to a PC by following the procedure described in paragraph 1.0,
- b) Click on “Instrument” on the instrument bar and select “Instrument File Manager”,
- c) Wait for the complete file list to download from your instrument to the PC,
- d) The window “INSTRUMENT FILE MANAGER” will open (see Fig. 4.1),
- e) In the “Find in” window select the folder “Ch. Plan” to visualize the TvMASTER PLANS inside,
- f) Click twice on the TvMASTER PLAN that you need to visualize.

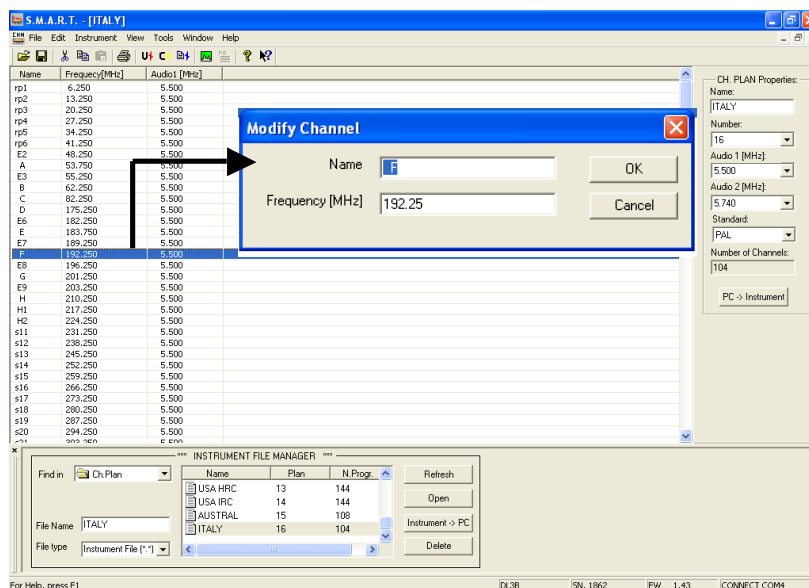


Figure 8.1

8.2.2 HOW TO CHANGE Tv MASTER PLANS USING A PC

HOW TO CHANGE AN EXISTING PROGRAM

- a) Connect your instrument to a PC by following the procedure described in paragraph 1.0,
- b) Click on “Instrument” on the instrument bar and select “Instrument File Manager”,
- c) Wait for the complete file list to download from your instrument to the PC,
- d) The window “INSTRUMENT FILE MANAGER” will open (see Fig. 4.1),
- e) In the “Find in” window select the folder “Ch. Plan” to visualize the TvMASTER PLANS inside,
- f) Click twice on the TvMASTER plan required to visualize it,
- g) Click twice on the PROGRAM (Radio-TV) you want to modify,
- h) The program will open a window where it will be possible to see all the parameters regarding the new program to be added (see Fig. 9.1),
- i) Modify the parameters and press “Ok” to confirm the program modification (see Fig. 8.1).

HOW TO ADD A NEW PROGRAM

Connect your instrument to a PC by following the procedure described in paragraph 1.0,

- a) Click on “Instrument” on the instrument bar and select “Instrument File Manager”,
- b) Wait for the complete file list to download from your instrument to the PC,
- c) The window “INSTRUMENT FILE MANAGER” will open (see Fig. 4.1),
- d) In the “Find in” window select the folder “Ch. Plan” to visualize the TvMASTER PLANS inside,
- e) Click twice on the TvMASTER plan required to visualize it,
- f) Using the right side of the mouse, click on the required line and select “Add”,
- g) The program will open a window where it will be possible to see all the parameters regarding the new program to be added (see Fig. 8.1),
- h) Press “Ok” to confirm the addition of a new program.

8.2.3 HOW TO TRANSFER TvMASTER PLANS FROM A PC TO YOUR METER

- d) Carry out the changes by following the procedure described in paragraph 8.2.2 (MODIFY AND EXISTING PROGRAM or ADD A NEW PROGRAM),
- e) Click on the “PC-Instrument” key in the “MEM. PLAN properties:” section (on the right-hand side of the screen) to transfer the memory plans from you PC to an instrument,
- f) The memory plan will be loaded in the instrument and will replace the one previously stored.

8.2.4 HOW TO PRINT TvMASTER FROM THE METER USING A PC

- a) Connect your instrument to a PC by following the procedure described in paragraph 1.0,
- b) Click on “Instrument” on the instrument bar and select “Instrument File Manager”,
- c) Wait for the complete file list to download from your instrument to the PC,
- d) The window “INSTRUMENT FILE MANAGER” will open (see Fig. 4.1),
- e) In the “Find in” window select the folder “Ch. Plan” to visualize the TvMASTER PLANS inside,
- f) Click twice on the TvMASTER plan required to visualize it,
- g) On the instrument bar click on “File” and select “Print Setup”,
- h) Set the print parameters and press “OK”.

8.2.5 HOW TO SAVE TvMASTER PLANS FROM YOUR METER IN A PC

- a) Connect your instrument to a PC by following the procedure described in paragraph 1.0,
- b) Click on “Instrument” on the instrument bar and select “Instrument File Manager”,
- c) Wait for the complete file list to download from your instrument to the PC,
- d) The window “INSTRUMENT FILE MANAGER” will open (see Fig. 4.1),
- e) In the “Find in” window select the folder “Ch. Plan” to visualize the TvMASTER PLANS inside,
- f) Click twice on the TvMASTER plan required to visualize it,
- g) On the instrument bar click on “File” and select “Save As”,
- h) Chose where you want to save the file, name it and press “Save”,
- i) The S.M.A.R.T. PRO program will save the memory plan, obtained from the meter, in the PC in file format .chn.

8.2.6 HOW TO DELETE TvMASTER PLANS FROM YOUR METER USING A PC

- a) Connect your instrument to a PC by following the procedure described in paragraph 1.0,
- b) Click on “Instrument” on the instrument bar and select “Instrument File Manager”,

- c) Wait for the complete file list to download from your instrument to the PC,
- d) The window “INSTRUMENT FILE MANAGER” will open (see Fig. 4.1),
- e) Click twice on the TvMASTER plan required to visualize it,
- f) In the “INSTRUMENTS FILE MANAGER” window, press the “Delete” key; the TVMASTER plan will be cancelled from the instrument.

8.3 NOTE

- a) **You should NOT delete existing channel plans because the generated memory plans, based on the eliminated channel plan, may be affected.**

8.4 WARNING

If the above procedure continues to fail, contact your local ROVER agent, or contact the ROVER service department directly by email: wecare@roverinstruments.com.

9.0 INSTRUMENT FILE MANAGER (MANUAL CREATION OF NEW MEMORY PLANS MANUMEMORY MIX)

This function allows you to manually create new MEMORY PLANS - MANUMEMORY(MIX) RADIO-TV-SAT – using a PC, and to transfer them to a measuring instrument (See NOTES 9.2.a).

9.1 DETAILED PROCEDURE

9.1.1 CREATE MANUAL MEMORY PLANS MANUALLY USING A PC

- a) Connect your instrument to a PC by following the procedure described in paragraph 1.0,
- b) Click on “Tools” on the instrument bar, select “Mem” then select “Read Mem from Instrument”,
- c) Wait for the file list to be downloaded from the measuring instrument to the PC,
- d) The “Instruments Files” window will appear on the screen,
- e) Click twice on the manual memory plan already present in the meter (for example MANU25) (See Notes 9.3.a),
- f) All the programs, found in the manual memory plan, will be listed.
- g) Modify/adjust/cancel all the programs by following the instructions described previously,
- h) In the “MEM. PLAN properties:” section (on the right side of the PC), in the area “Name”, name the new memory plan (6 characters max),
- i) In the “MEM. PLAN properties:” section (on the right side of the PC) select the area “Number”, select where you want to save the manual memory plan (see Notes 9.3.b and 9.3.c),
- j) Click on the “PC-Instrument” key in the “MEM. PLAN properties:” (on the right side of the PC) to download the new manual memory plans from a PC to your measuring instrument.
- k) Then new manual memory plan will be loaded in the instrument.

9.2 NOTES

- a) If no manual memory plan is stored in the instrument, proceed with the memory plan upgrade described in the first pages of this manual.
- b) The Manual Memory positions available are: from number 1 to number 25.
- c) If you do not select a new memory position, the memory Manual stored in the instrument will be overwritten.

9.3 WARNING

If the above procedure continues to fail, contact your local ROVER agent, or contact the ROVER service department directly by email: wecare@roverinstruments.com.